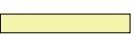




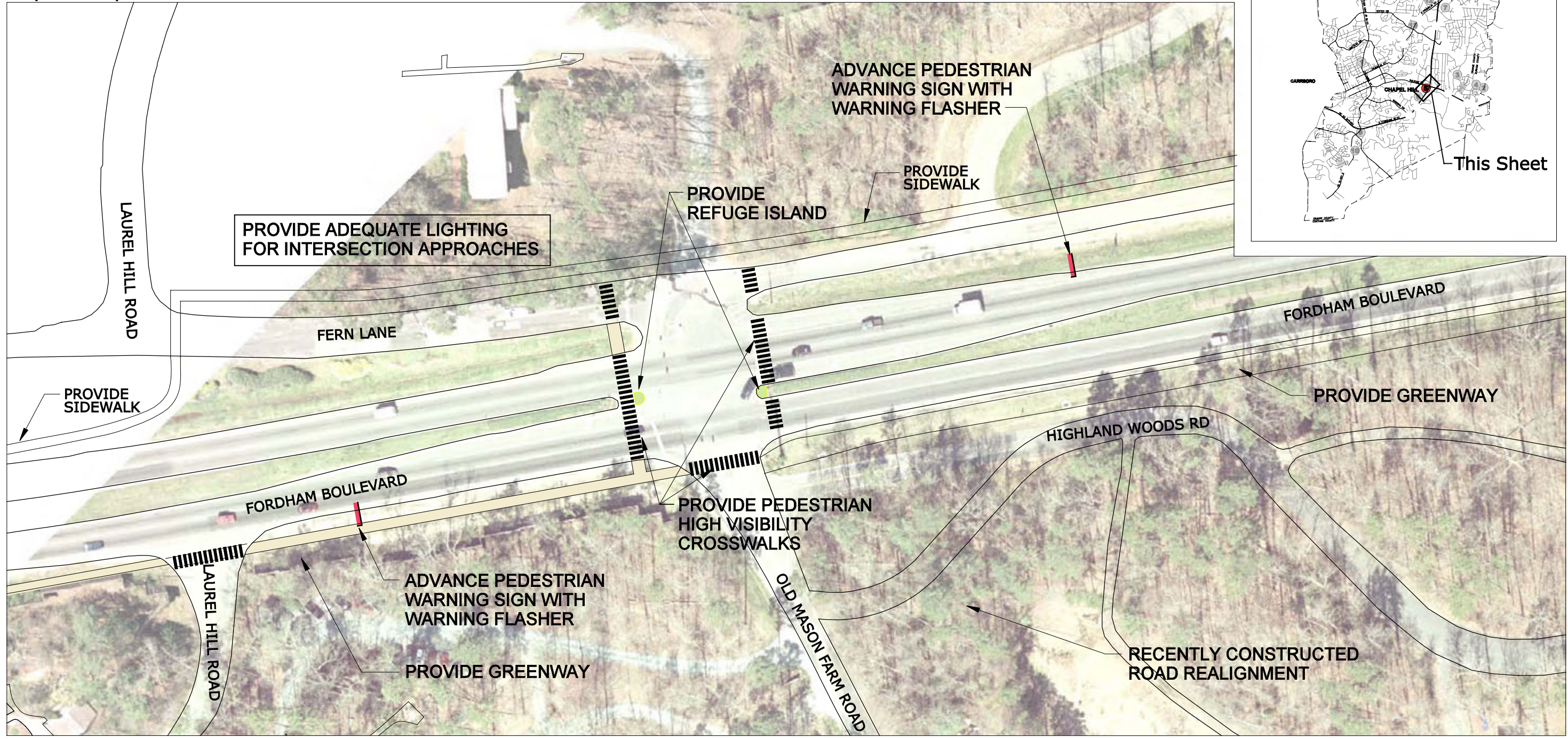


Key	
	SIDEWALK
	CROSSWALK
	HIGH VISIBILITY CROSSWALK
	PEDESTRIAN REFUGE
	FLASHING WARNING SIGN

Proposed Improvements



NC 86/Martin Luther King Jr. Boulevard Corridor and Town-Wide Pedestrian Safety Evaluation Study

Lappas + Havener, PA LANDSCAPE ARCHITECTS
 Ramey Kemp & Associates, Inc. Transportation Engineering

5. Fordham Boulevard at Old Mason Farm Road (Task Force Recommendations for Buildout Conditions)

