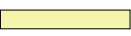

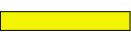


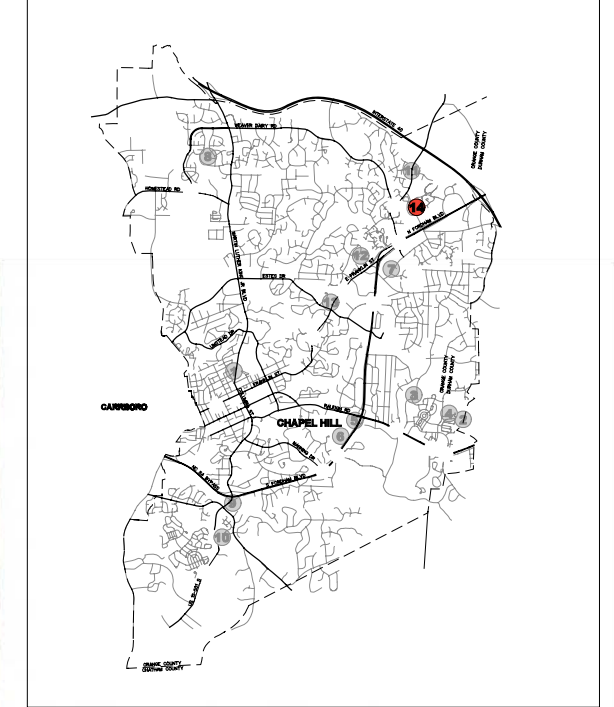


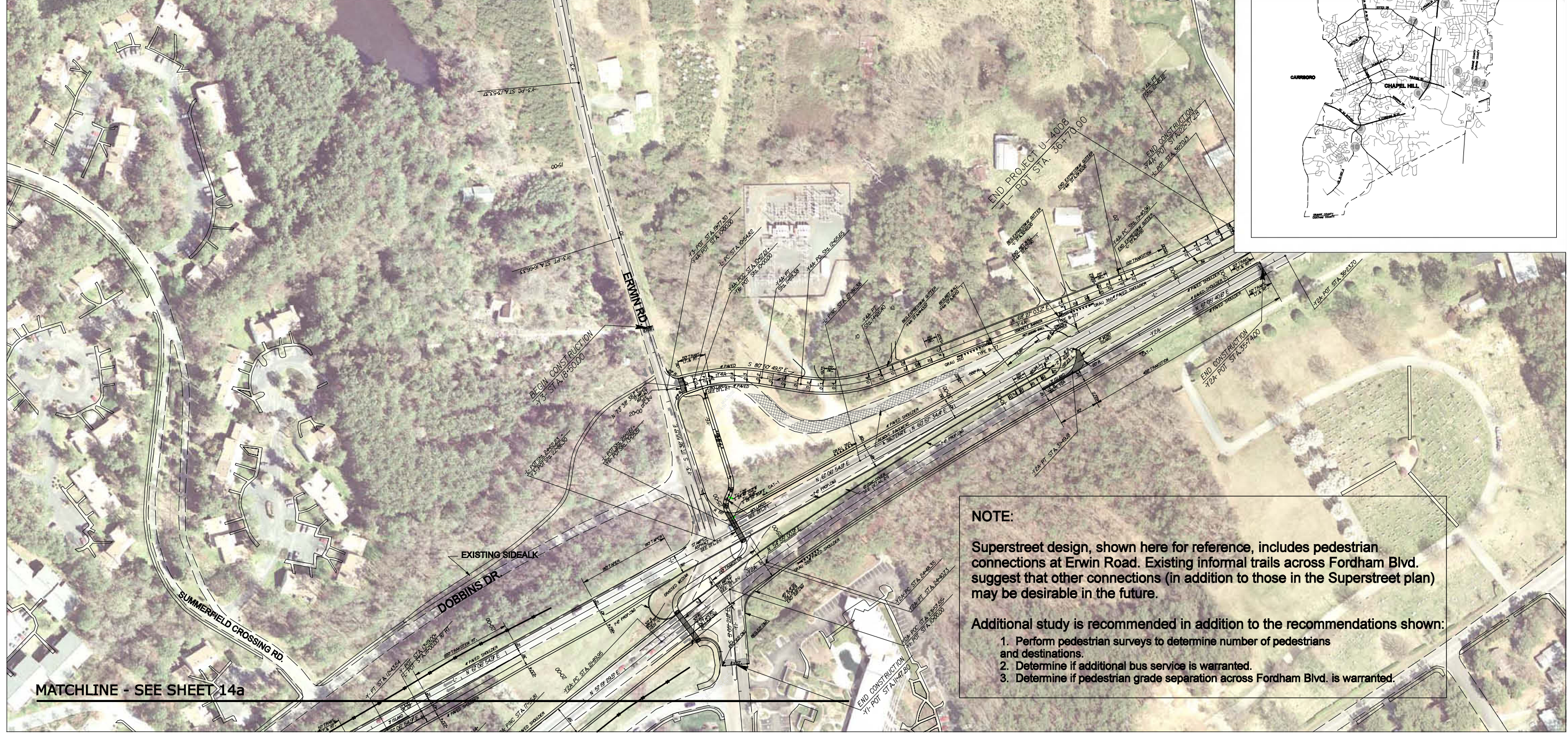
Key

	SIDEWALK		PEDESTRIAN REFUGE
	CROSSWALK		FLASHING WARNING SIGN
	HIGH VISIBILITY CROSSWALK		

Vicinity Map not to scale



Proposed Improvements



NOTE:

Superstreet design, shown here for reference, includes pedestrian connections at Erwin Road. Existing informal trails across Fordham Blvd. suggest that other connections (in addition to those in the Superstreet plan) may be desirable in the future.

Additional study is recommended in addition to the recommendations shown:

1. Perform pedestrian surveys to determine number of pedestrians and destinations.
2. Determine if additional bus service is warranted.
3. Determine if pedestrian grade separation across Fordham Blvd. is warranted.

NC 86/Martin Luther King Jr. Boulevard Corridor and Town-Wide Pedestrian Safety Evaluation Study

14b. Fordham Boulevard at Erwin Road ("Superstreet" Intersection)