

BRIDGEPOINT

Chapel Hill, North Carolina

Site Plan

SITE DATA

Tax Map #s: 7. 24..12 & 12A
 Parcel ID #s: 9870-91-4489 / 9870-91-9528
 Acreage: Net - 8.35 AC / 363,611 SF
 Gross - 9.18 AC / 399,972 SF

Existing Zoning: R-2
 Proposed Zoning: R-5C
 Proposed Special Use Permit: PD- MU
 Required Minimum Building Setbacks:
 Street- 20', Interior- 6', Solar- 8'

Proposed Dwelling Units: 23
 (Includes 4 Affordable Units)
 Units per Acre: 5.2 (based on 4.39 acres)

Floor Area Proposed: Retail / Office - 27,400 SF
 Townhomes - 50,167 SF
 Total - 77,567 SF

Building A - One Story w/ Basement 16,700 SF
 Building B - One Story w/ Vaulted Ceiling 10,700 SF
 Townhome Buildings - Two Story - 3 Bedroom Units
 (Units 19 & 20 w/ basements)

Required Parking : Minimum - 88 Spaces
 (Retail / Office) Maximum - 128 Spaces
 *Assumes 19,050SF of General Retail and 8,350SF of Office

Required Parking : Minimum - 40 Spaces
 (Residential) Maximum - 52 Spaces

Proposed Parking: Retail / Office - 87 Spaces
 Residential - 47 Spaces
 Total - 134 Spaces

Proposed Bicycle Parking: Retail Area -12 spaces
 Impervious Surface: 3.45 ± AC / 150,282 ± SF (37.6%)
 RCD Disturbance: 7,872 SF In Managed Area
 13,965 SF In Upland Area
 (Areas disturbed for Blotretention Facility)

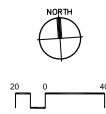
Private Trash Collection Proposed

BRIDGEPOINT
 Chapel Hill, North Carolina

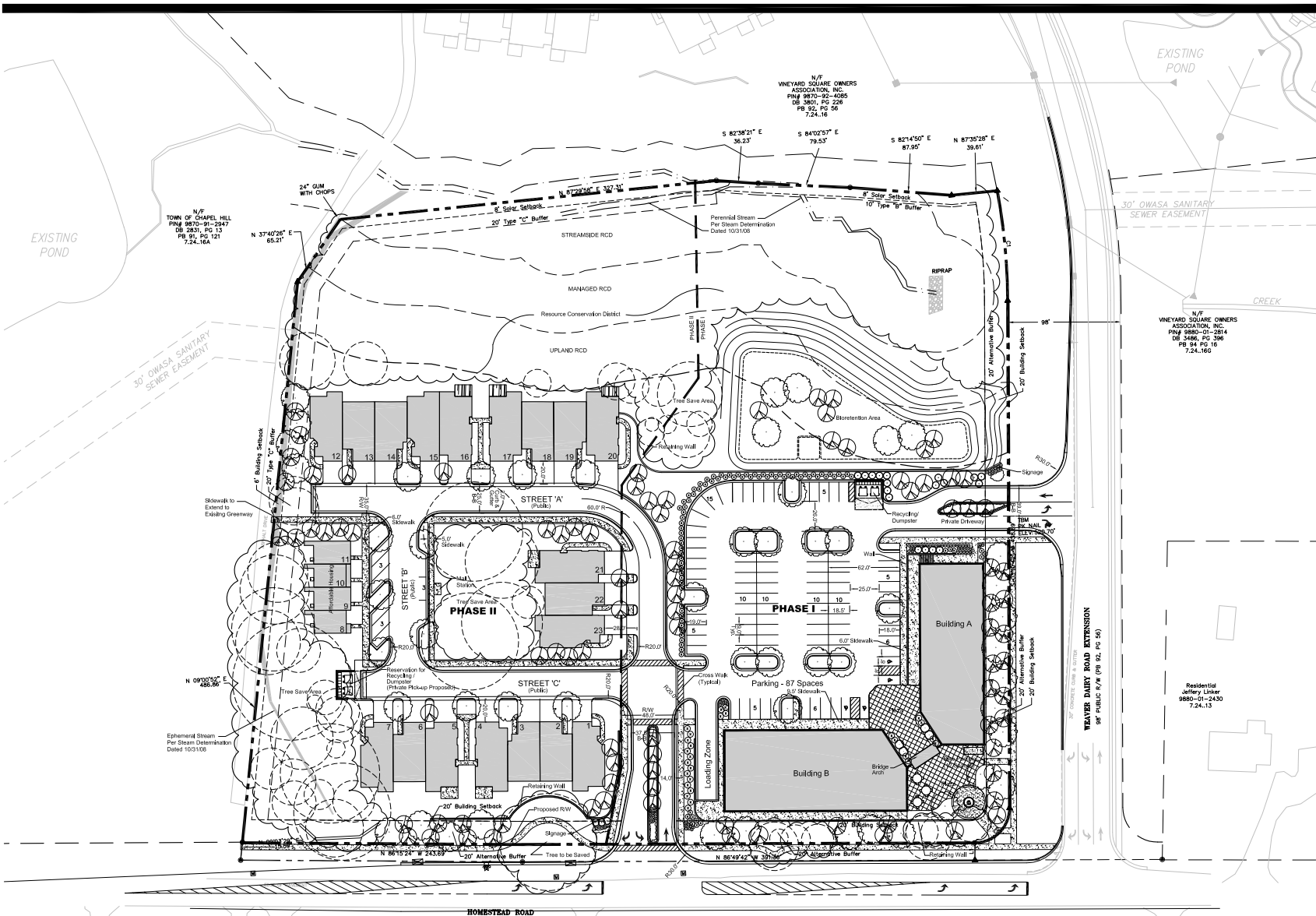
Site Plan



THE DESIGN RESPONSE
 1616 Evans Road, Suite 205
 Cary, NC 27513
 (919) 678-8050 Fax (919) 678-8150



DATE:	3/3/09
SCALE:	1"=40'
DRAWN BY:	EJK
JOB NO.:	050-001
SHEET NO.:	5
3/10/09	Per Sample Application Comments
DATE:	REVISION:
	OF 13 SHEETS



Residential Susan Kurland 9870-91-1164 7.24.44D
 Residential Carol S. Tison 9870-90-0457 7.24.44
 Residential David & Deborah Tison 9870-90-4109 7.24.44E
 Residential William & Virginia Hood 9870-90-7548 7.24.43
 Vacant State of North Carolina 9860-00-0680 7.24.43C