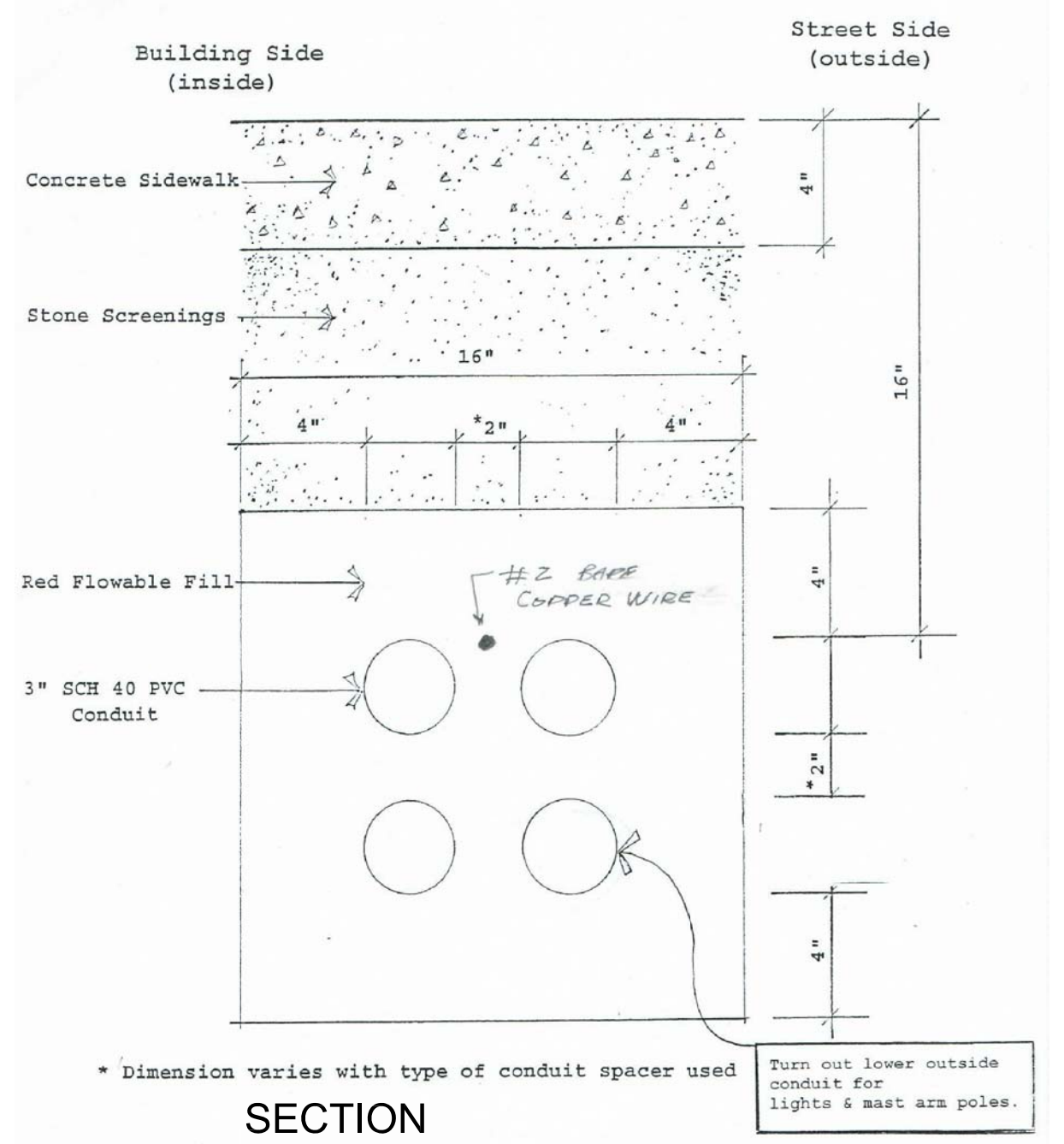
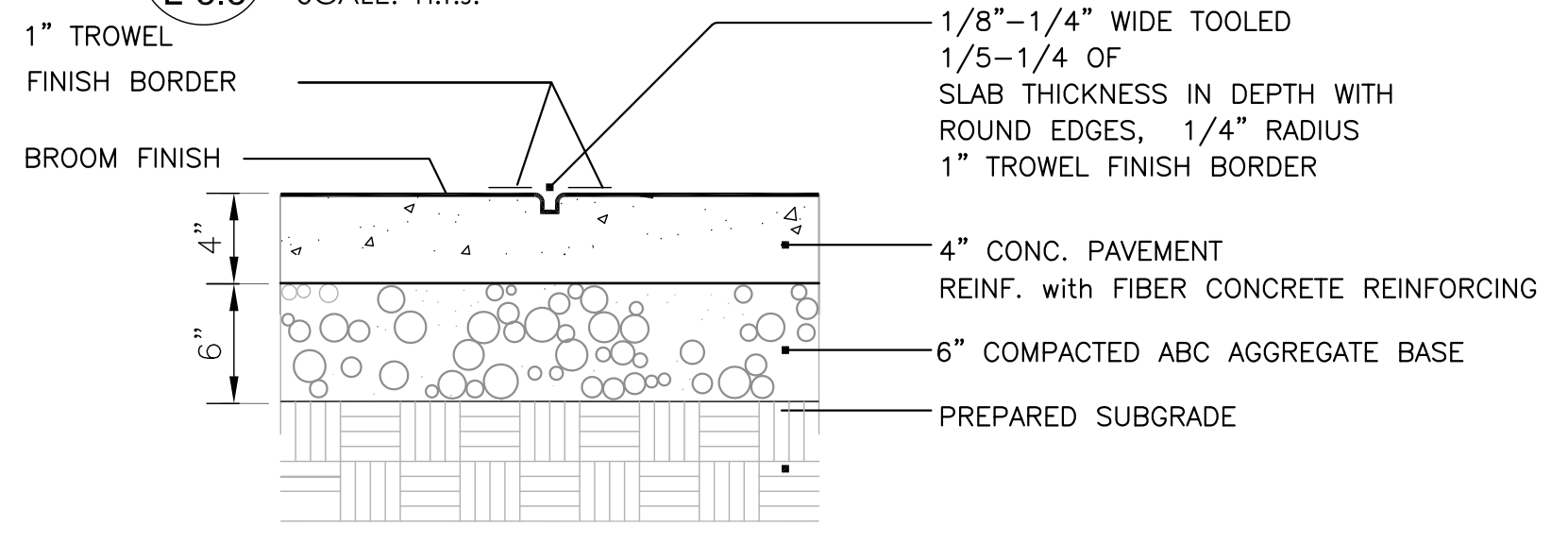


1 Metal Guard Rail (By Metalsmith)  
L-3.3 SCALE: n.t.s.



3 Duct Bank Installation  
L-3.3 SCALE: n.t.s.

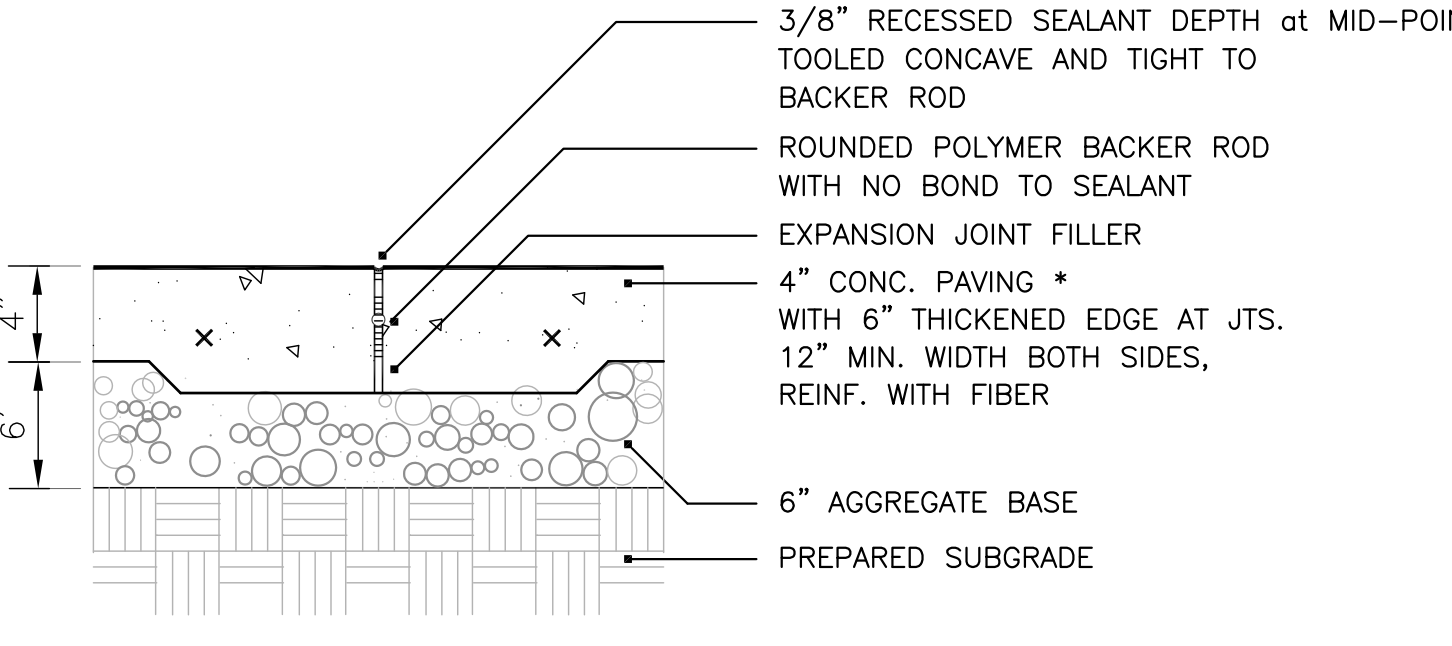
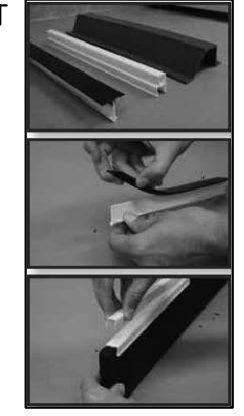


4 Concrete Paving With CONTROL JOINT  
L-3.3 SCALE: 1"=1'-0"

RIGHT-JOINT ASPHALT EXPANSION JOINT  
SEMI-RIGID PANEL COMPOSED OF FIBERGLASS SANDWICHED AROUND ASPHALT CORE - 3/8" THICKNESS

PLASTIC VOID CAP EXPANSION JOINT  
SEMI-RIGID CONTRACTION JOINT

PLASTIC KEYWAY EXPANSION JOINT  
RIGHT/POINTE COMPANY  
234 HARVESTORE DR.  
DEKALB, ILL. 60115  
888-775-5700  
WWW.RIGHTPOINTE.COM

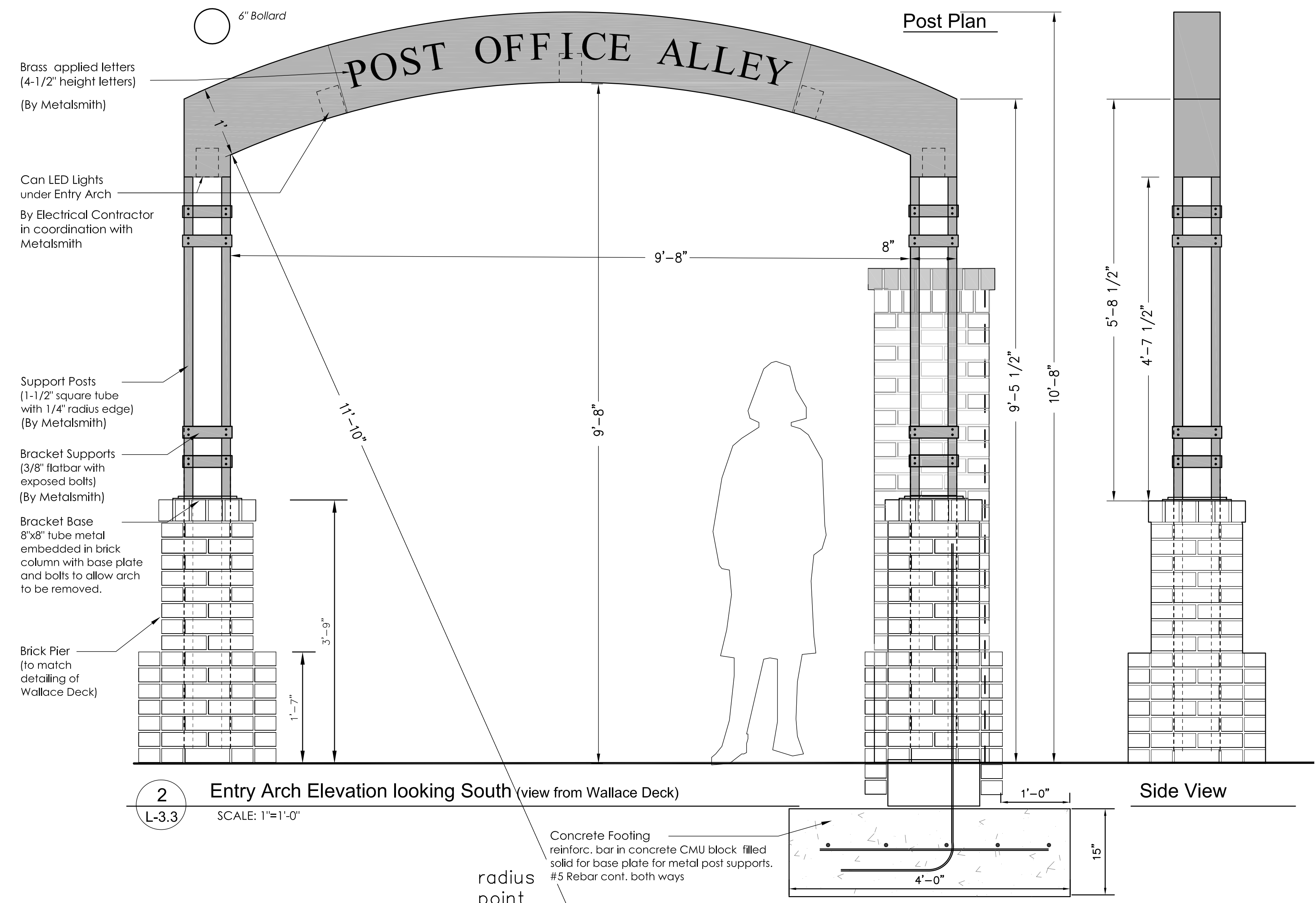


5 Conc. Paving Expansion Joint With THICKENED EDGE  
L-3.3 SCALE: 1"=1'-0"

SEAL JOINTS WITH SELF-LEVELING DOW CORNING C60 LOW MODULAS SILICONE SEALANT (COLOR - GREY) OR TREMCO - DYMOMIC 100 HIGH PERFORMANCE POLYURETHANE SEALANT AT TSCS@tremcoinc.com OR ELASTOMERIC POLYURETHANE SEALANT BASF MASTERSEAL NP 1 WWW.MASTER-BUILDERS.BASF.US SEAL JOINT SO APPEARANCE IS A NEAT LINE.



NOTES:  
All metal to be Hot-dipped Galvanized Steel



2 Entry Arch Elevation looking South (view from Wallace Deck)  
L-3.3 SCALE: 1"=1'-0"



POST OFFICE ALLEY  
Town of Chapel Hill  
179 E. Franklin Street  
Chapel Hill, NC

revisions

date October 05, 2018

Alley Improvements Plan

Sheet Name

Details

Sheet Number

L3.3

For Review