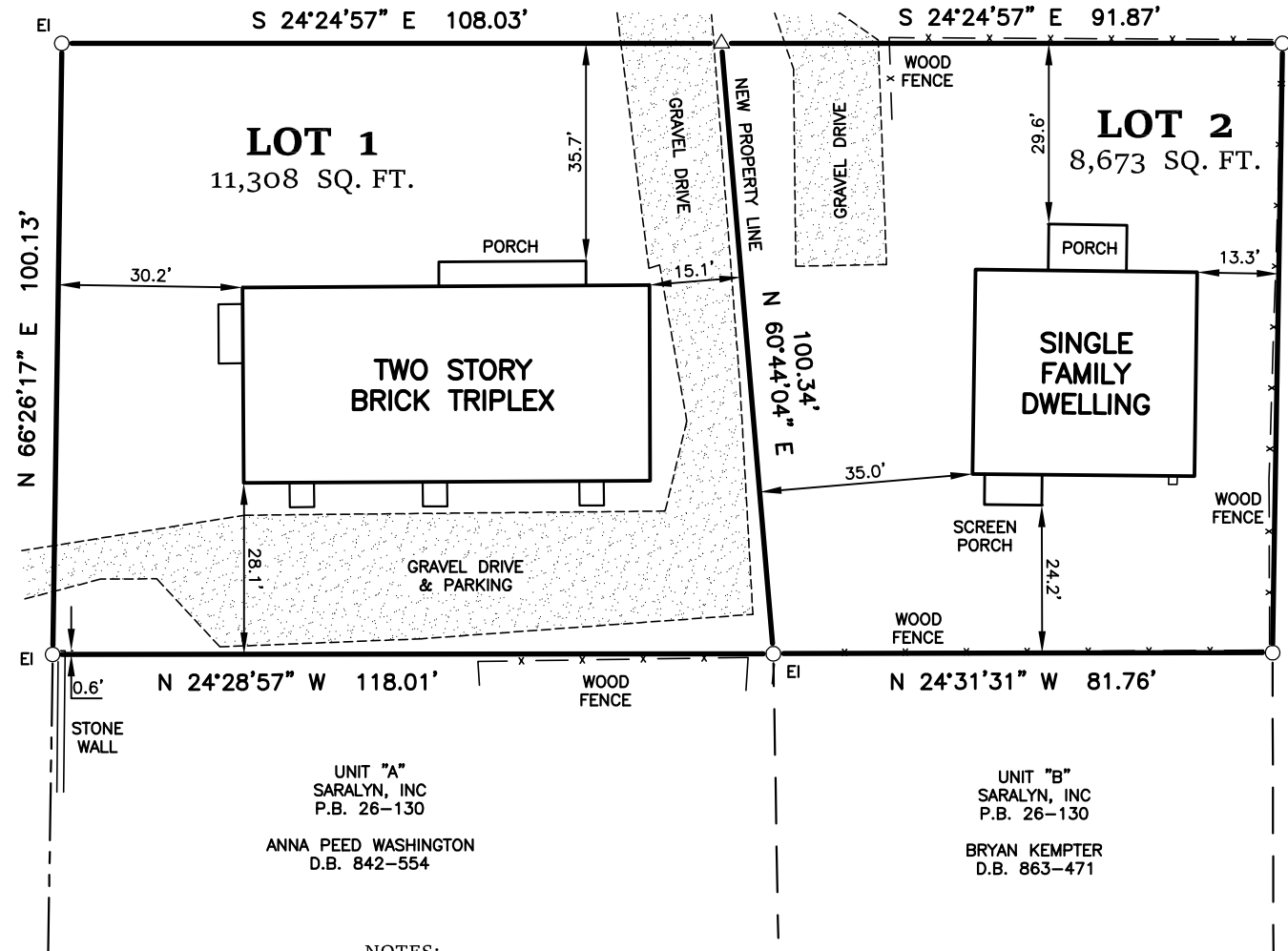


**PRELIMINARY—NOT FOR RECORDATION,  
CONVEYANCES, OR SALES**

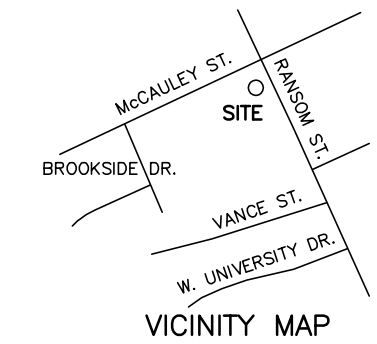
**RANSOM STREET**  
40.0' PUBLIC R/W

**MCCAULEY STREET**  
50.0' PUBLIC R/W



S 24°20'19" E 109.69'  
TIE: EI TO EI

310 RANSOM ST.  
PIN: 9788-24-7696  
LYDIA BOAST TRUST  
D.B. 6179-371



D.B. 186-470

PROPERTY OF

**JOYCE BROWN**

306 RANSOM STREET  
HERMAN H. BROWN TRACT  
PIN: 9788-24-7882  
CHAPEL HILL TWP. ORANGE COUNTY  
NORTH CAROLINA

SCALE: 1" = 30' MARCH 27, 2003

**BILLINGS LAND SURVEYS, PLLC** P-1495  
P.O. BOX 824 CARRBORO NORTH CAROLINA 27510

**LEGEND**

- EXISTING IRON FOUND
- ⊗ IRS - IRON REBAR SET
- △ CALC. CORNER
- CONC. MON.
- ⊕ UP - UTILITY POLE
- ⊙ SSMH - SANITARY SEWER MANHOLE
- — — OVERHEAD UTILITY LINE

**NOTES:**

1. SURVEY RESULTS SHOWN HEREON ARE BASED UPON A FIELD SURVEY PERFORMED MARCH 27, 2003 BY FREEHOLD LAND SURVEYS.

UNIT "A"  
SARALYN, INC  
P.B. 26-130  
ANNA PEED WASHINGTON  
D.B. 842-554

UNIT "B"  
SARALYN, INC  
P.B. 26-130  
BRYAN KEMPTER  
D.B. 863-471