



JP2 ARCHITECTS
 2835 O'Donnell Street, Suite 300
 Baltimore, MD 21224
 t 410.276.7470
 f 410.276.7471
 www.JP2architects.com

CONSULTANTS

Structural:
 Meyer Consulting Engineers Corp.
 451 Hungerford Drive, Suite 600
 Rockville, MD 20850
 t 301.783.5690
 f 301.783.5695

Mechanical, Electrical, Plumbing, Fire Protection:
 Alliance
 12355 Sunrise Valley Drive, Suite 220
 Reston, VA 20191
 t 703.749.7941
 f 703.749.7942

Landscape:
 Studio 39.
 6416 Grovedale Drive, Suite 100-A
 Alexandria, VA 22310
 t 703.719.6500
 f 703.719.6503

SEAL / SIGNATURE

PROJECT

**Eastgate Shopping
 Center - Bldg. D**
 1800 E Franklin Street
 Chapel Hill, NC 27514

CLIENT / OWNER

Federal Realty Investment Trust
 1626 E. Jefferson Street
 Rockville, MD 20852
 t 301.998.8100

REVISION DRAWING LOG

No.	Date	Title

PROJECT NUMBER: 15-020
 COPYRIGHT © 2015 JP2 ARCHITECTS

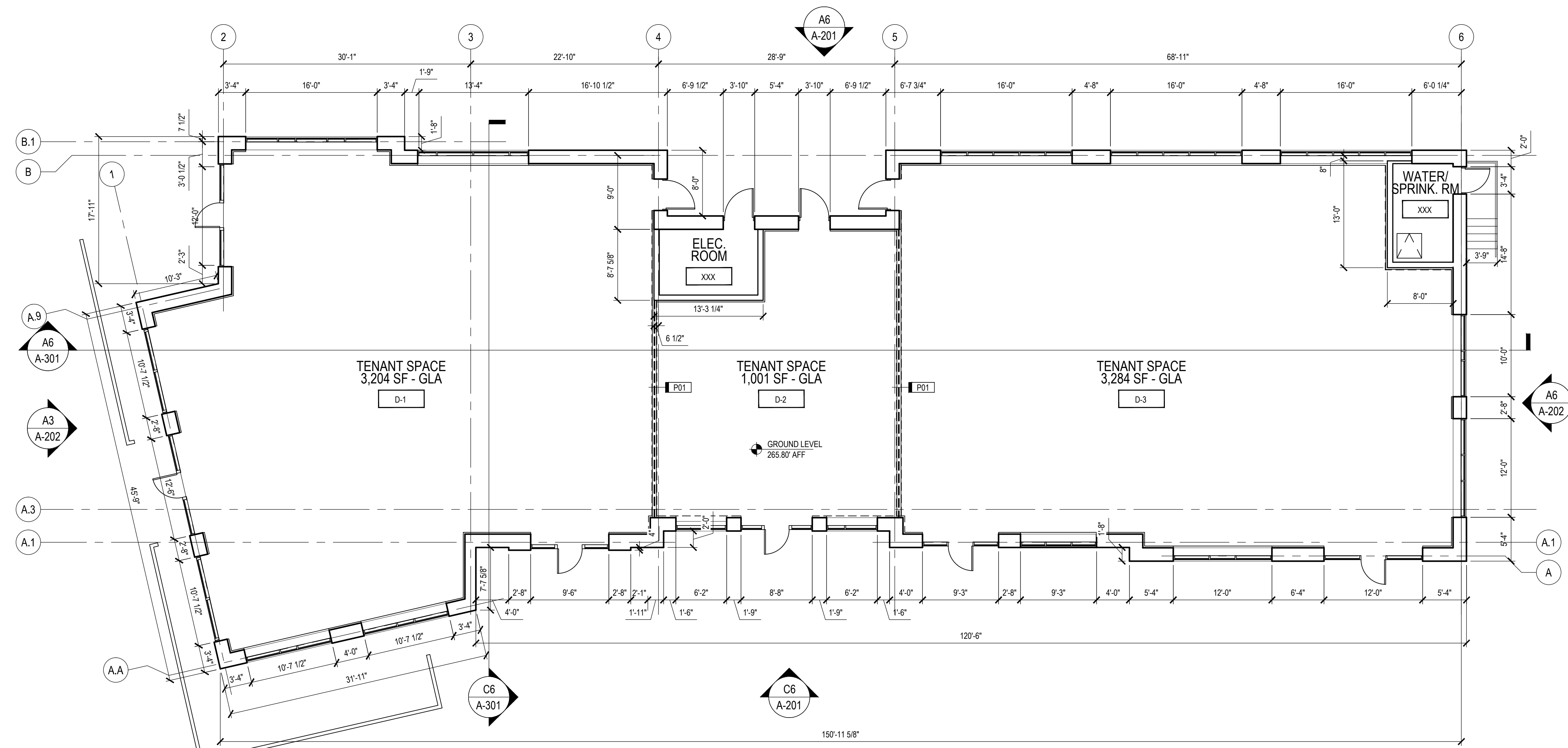
DRAWING TITLE

FLOOR PLAN

DRAWING NUMBER

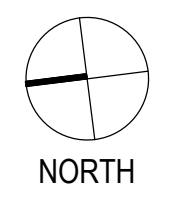
A-101

Scale AS NOTED Issue Date 11.30.2015



NOTE:
 WALL PARTITION P01 TO BE 6" METAL
 STUD W/ TYPE X DRYWALL BOTH
 SIDES, SOUND INSULATION (FIRE
 RATED ASSEMBLY).

A6 FLOOR PLAN
 SCALE: 1/8" = 1'-0"





JP2 ARCHITECTS
 2835 O'Donnell Street, Suite 300
 Baltimore, MD 21224
 t 410.276.7470
 f 410.276.7471
 www.JP2architects.com

CONSULTANTS

Structural:
 Meyer Consulting Engineers Corp.
 451 Hungerford Drive, Suite 600
 Rockville, MD 20850
 t 301.783.5690
 f 301.783.5695

Mechanical, Electrical, Plumbing, Fire Protection:
 Alliance
 12355 Sunrise Valley Drive, Suite 220
 Reston, VA 20191
 t 703.749.7941
 f 703.749.7942

Landscape:
 Studio 39.
 6416 Grovedale Drive, Suite 100-A
 Alexandria, VA 22310
 t 703.719.6500
 f 703.719.6503

SEAL / SIGNATURE

PROJECT

Eastgate Shopping Center - Bldg. D
 1800 E Franklin Street
 Chapel Hill, NC 27514

CLIENT / OWNER

Federal Realty Investment Trust
 1626 E. Jefferson Street
 Rockville, MD 20852
 t 301.998.8100

REVISION DRAWING LOG

No.	Date	Title

PROJECT NUMBER: 15-020
 COPYRIGHT © 2015 JP2 ARCHITECTS

DRAWING TITLE

ELEVATIONS

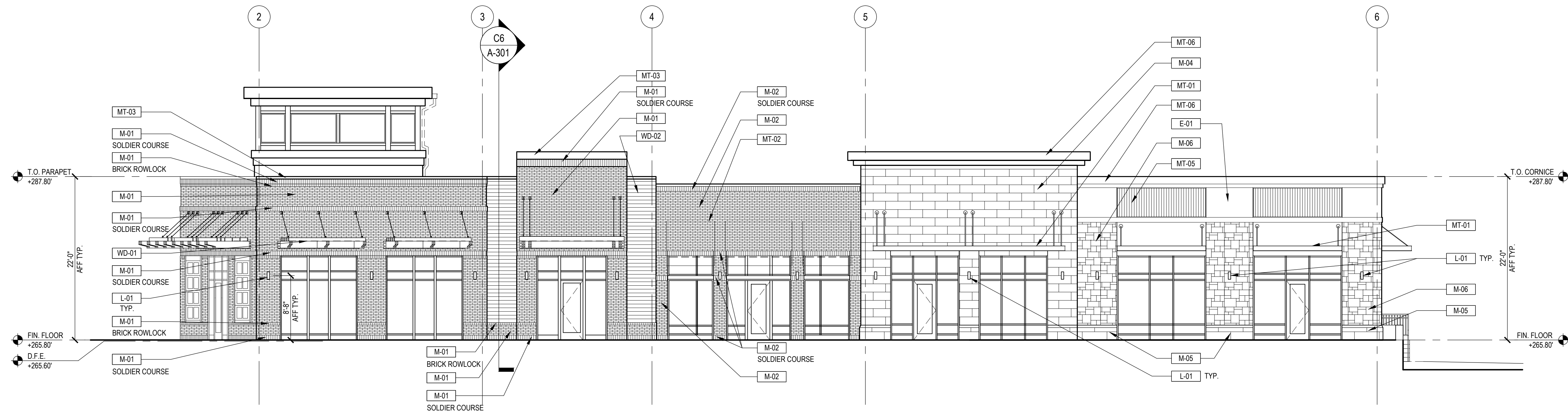
DRAWING NUMBER

A-201

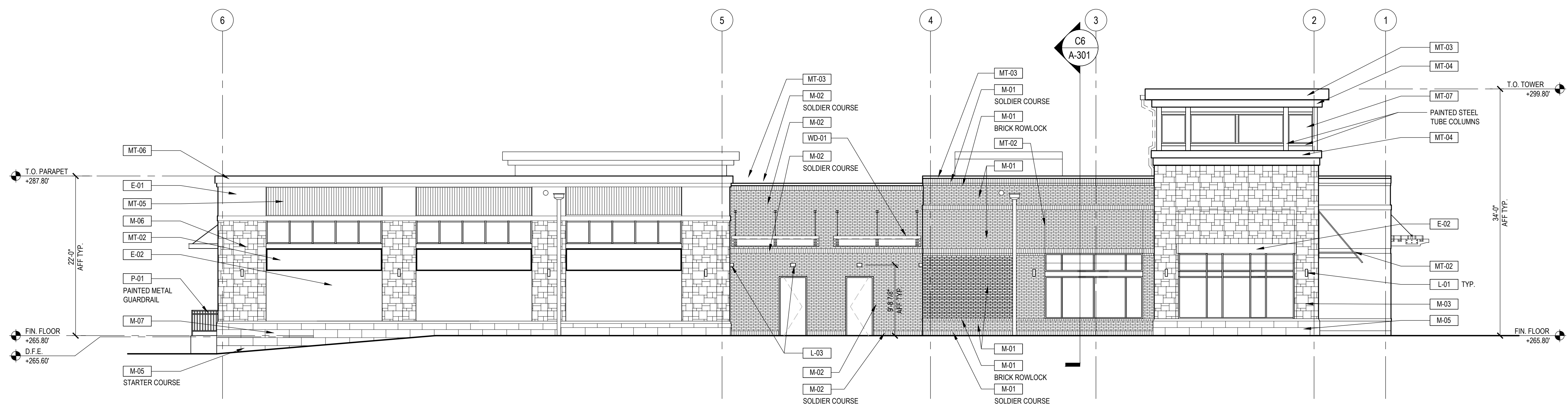
Scale AS NOTED Issue Date 11.30.2015

MATERIAL CALCULATION TOTALS	
DESIG.	SQUARE FOOTAGE
M-01	1477
M-02	854
M-03	314
M-04	449
M-05	140

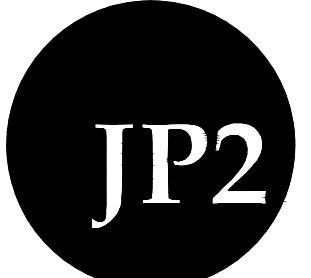
DESIG.	SQUARE FOOTAGE
M-06	686
M-07	172
E-01	291
E-02	535
MT-05	288
WD-02	153



C6 WEST ELEVATION
 SCALE: 1/8" = 1'-0"
 0 8' 16'



A6 EAST ELEVATION
 SCALE: 1/8" = 1'-0"
 0 8' 16'



JP2 ARCHITECTS
 2835 O'Donnell Street, Suite 300
 Baltimore, MD 21224
 t 410.276.7470
 f 410.276.7471
 www.JP2architects.com

CONSULTANTS

Structural:
 Meyer Consulting Engineers Corp.
 451 Hungerford Drive, Suite 600
 Rockville, MD 20850
 t 301.783.5690
 f 301.783.5695

Mechanical, Electrical, Plumbing, Fire Protection:
 Alliance
 12355 Sunrise Valley Drive, Suite 220
 Reston, VA 20191
 t 703.749.7941
 f 703.749.7942

Landscape:
 Studio 39.
 6416 Grovedale Drive, Suite 100-A
 Alexandria, VA 22310
 t 703.719.6500
 f 703.719.6503

SEAL / SIGNATURE

PROJECT

Eastgate Shopping Center - Bldg. D
 1800 E Franklin Street
 Chapel Hill, NC 27514

CLIENT / OWNER

Federal Realty Investment Trust
 1626 E. Jefferson Street
 Rockville, MD 20852
 t 301.998.8100

REVISION DRAWING LOG

No.	Date	Title

PROJECT NUMBER: 15-020
 COPYRIGHT © 2015 JP2 ARCHITECTS

DRAWING TITLE

ELEVATIONS

DRAWING NUMBER

A-202

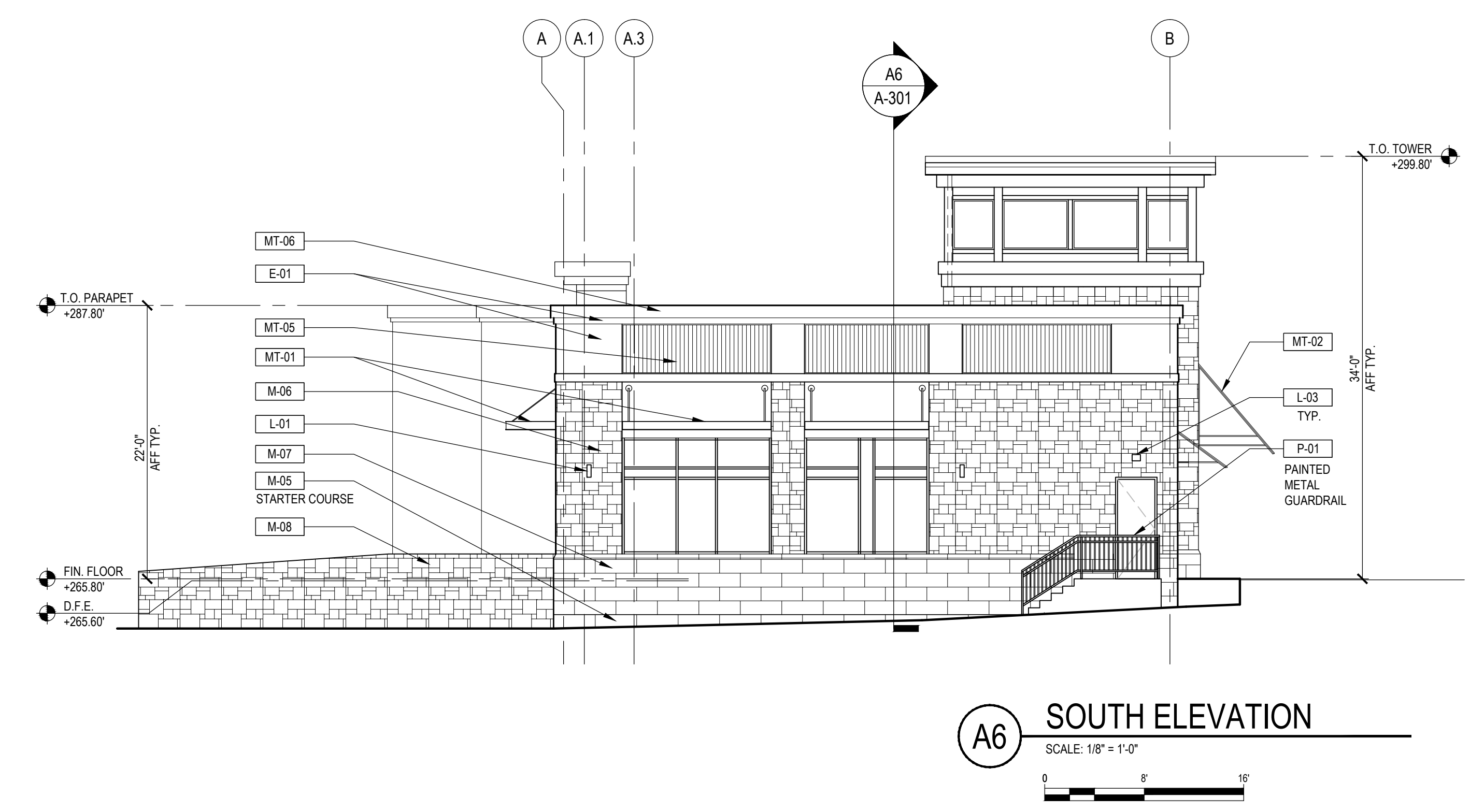
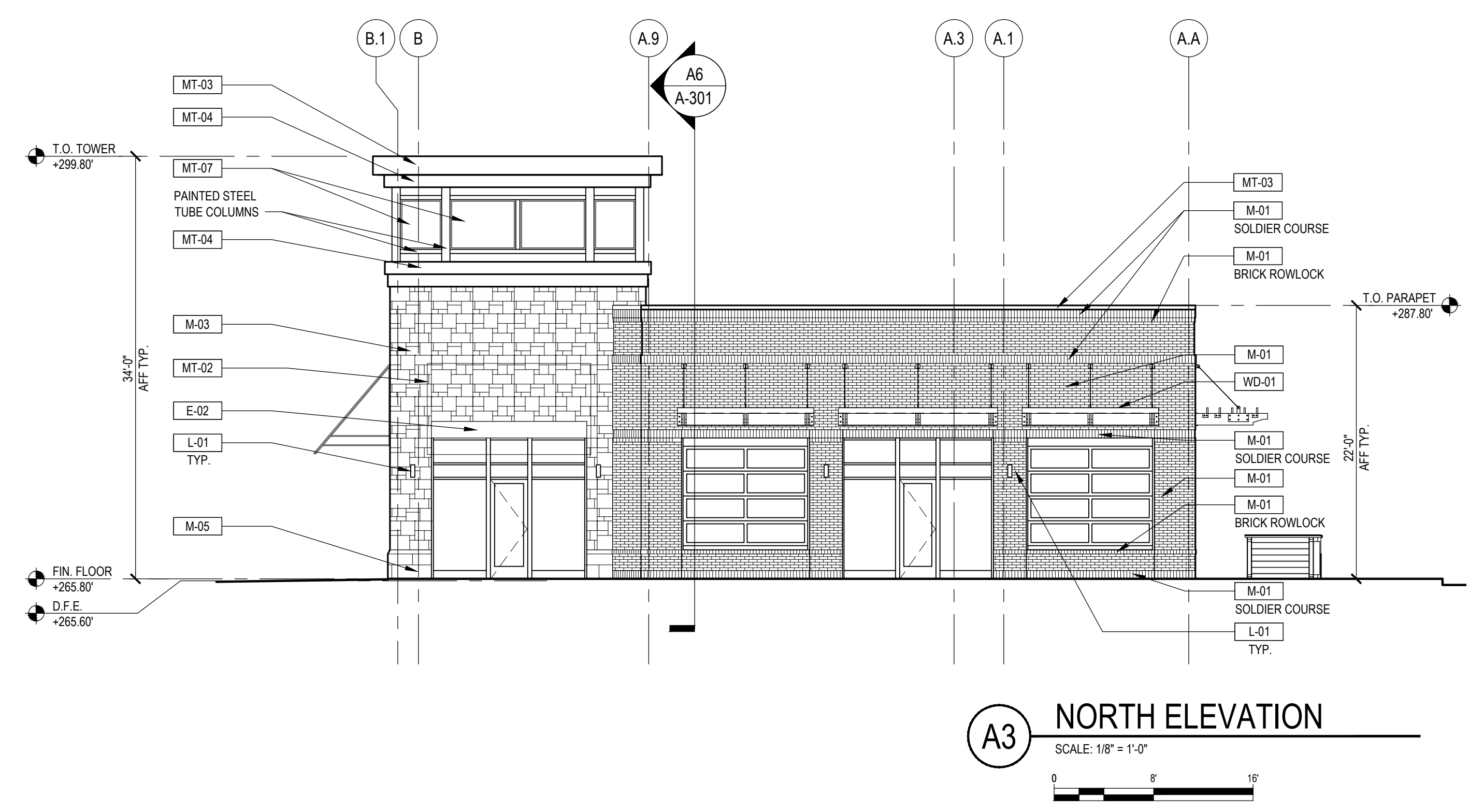
Scale AS NOTED Issue Date 11.30.2015

EXTERIOR FINISH SCHEDULE				
DESIG.	DESCRIPTION	MANUFACTURER & MODEL	FINISH/COLOR	NOTES/CONTACT
EIFS				
E-01	EXTERIOR INSULATION FINISH SYSTEM (EIFS)	DRYVIT; TUSCAN GLAZE	#804 PLATINUM GREY OVER FINESSE #617a WINTER EVE	DRAINABLE SYSTEM; HIGH IMPACT MESH BELOW 10'-0"
E-02	EXTERIOR INSULATION FINISH SYSTEM (EIFS)	DRYVIT; TUSCAN GLAZE	#804 PLATINUM GREY OVER FINESSE #310 CHINA WHITE	DRAINABLE SYSTEM; HIGH IMPACT MESH BELOW 10'-0"
MASONRY				
M-01	BRICK VENEER MASONRY	GLEN-GERY	BURGANDY IRONSPOT	HOLLY BENNETT, HollyAnn.Bennett@oldcastle.com
M-02	BRICK VENEER MASONRY	GLEN-GERY	BLADECUT / TWILIGHT IRONSPOT	HOLLY BENNETT, HollyAnn.Bennett@oldcastle.com
M-03	MANUFACTURED STONE CLADDING SYSTEM THIN-CLAD	ARRISCRAFT / ARRIS-STACK	DESERT SAND	HOLLY BENNETT, HollyAnn.Bennett@oldcastle.com
M-04	MANUFACTURED STONE CLADDING SYSTEM THIN-CLAD	ARRISCRAFT / ARRIS-TILE	GINGER-SMOOTH FINISH	HOLLY BENNETT, HollyAnn.Bennett@oldcastle.com
M-05	MASONRY STARTER COURSE	ARRISCRAFT	ADAIR LIMESTONE - SEPIA	HOLLY BENNETT, HollyAnn.Bennett@oldcastle.com
M-06	MANUFACTURED STONE VENEER	ELDORADO STONE	MOUNTAIN LEDGE - DURANGO	
M-07	MANUFACTURED STONE MASONRY UNITS	ARRISCRAFT / RENAISSANCE	GINGER-SMOOTH FINISH	HOLLY BENNETT, HollyAnn.Bennett@oldcastle.com
M-08	MANUFACTURED STONE MASONRY UNITS	ARRISCRAFT / RENAISSANCE	DESERT SAND	HOLLY BENNETT, HollyAnn.Bennett@oldcastle.com

METAL				
MT-01	LOUVERED METAL CANOPY	MAPES CANOPIES LUMISHADE	EXTRA DARK BRONZE	PRE-ENGINEERED CANOPY SYSTEM
MT-02	METAL FRAMED FABRIC AWNINGS		PAINTED METAL FINISH	SQUARE METAL TUBE FRAME FOR STRETCHED FABRIC PANEL
MT-03	METAL COPING	ATAS INTERNATIONAL, INC.	DARK BRONZE	
MT-04	METAL TRIM	ATAS INTERNATIONAL, INC.	DARK BRONZE	
MT-05	CORRUGATED METAL PANEL SIDING	ATAS INTERNATIONAL, INC.	DOVE GRAY - or to match existing	
MT-06	METAL COPING	ATAS BRAKE METAL	DOVE GRAY	
MT-07	METAL MESH PANELS WITH ALUMINUM FRAMES	MCNICHOLS		
WOOD				
WD-01	WOOD TRELLIS		CEDAR TIMBER	
WD-02	WOOD PANEL SIDING		CEDAR	1X SQUARE EDGE PLANKS
PAINT				
P-01	PAINT- EXTERIOR	SHERWIN WILLIAMS	URBANE BRONZE SW 7048	

MATERIAL CALCULATION TOTALS	
DESIG.	SQUARE FOOTAGE
M-01	705
M-03	260
M-05	35

DESIG.	SQUARE FOOTAGE
M-06	467
M-07	210
E-01	124
E-02	16
MT-05	136



A3 NORTH ELEVATION
 SCALE: 1/8" = 1'-0"

A6 SOUTH ELEVATION
 SCALE: 1/8" = 1'-0"



JP2 ARCHITECTS
 2835 O'Donnell Street, Suite 300
 Baltimore, MD 21224
 t 410.276.7470
 f 410.276.7471
 www.JP2architects.com

CONSULTANTS

Structural:
 Meyer Consulting Engineers Corp.
 451 Hungerford Drive, Suite 600
 Rockville, MD 20850
 t 301.783.5690
 f 301.783.5695

Mechanical, Electrical, Plumbing, Fire Protection:
 Alliance
 12355 Sunrise Valley Drive, Suite 220
 Reston, VA 20191
 t 703.749.7941
 f 703.749.7942

Landscape:
 Studio 39.
 6416 Grovedale Drive, Suite 100-A
 Alexandria, VA 22310
 t 703.719.6500
 f 703.719.6503

SEAL / SIGNATURE

PROJECT

**Eastgate Shopping
 Center - Bldg. D**
 1800 E Franklin Street
 Chapel Hill, NC 27514

CLIENT / OWNER

Federal Realty Investment Trust
 1626 E. Jefferson Street
 Rockville, MD 20852
 t 301.998.8100

REVISION DRAWING LOG

No.	Date	Title

PROJECT NUMBER: 15-020
 COPYRIGHT © 2015 JP2 ARCHITECTS

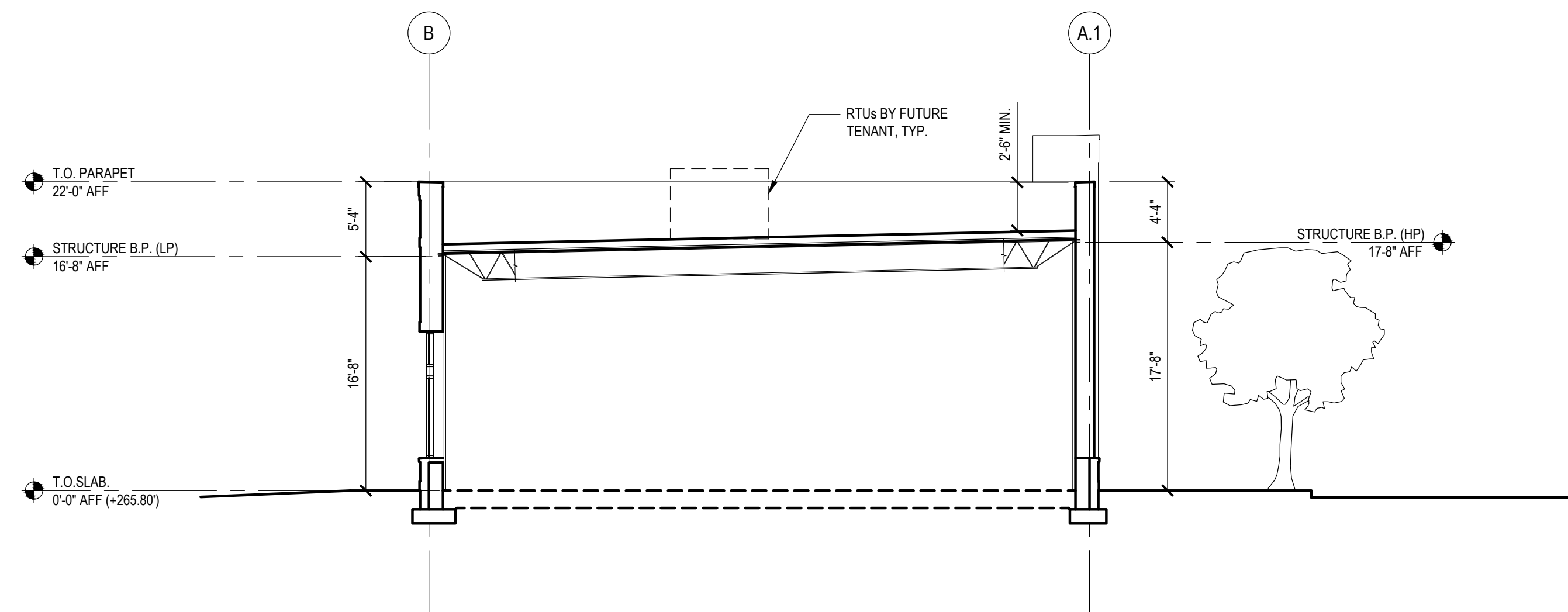
DRAWING TITLE

BUILDING SECTIONS

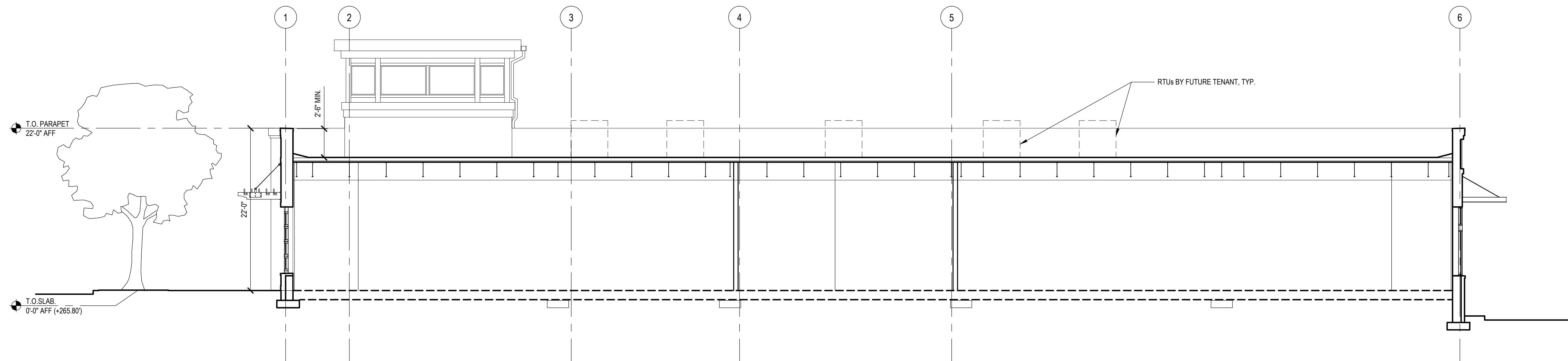
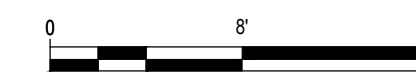
DRAWING NUMBER

A-301

Scale AS NOTED Issue Date 11.30.2015



C6 BUILDING SECTION
 SCALE: 1/8" = 1'-0"



A6 BUILDING SECTION
 SCALE: 1/8" = 1'-0"

