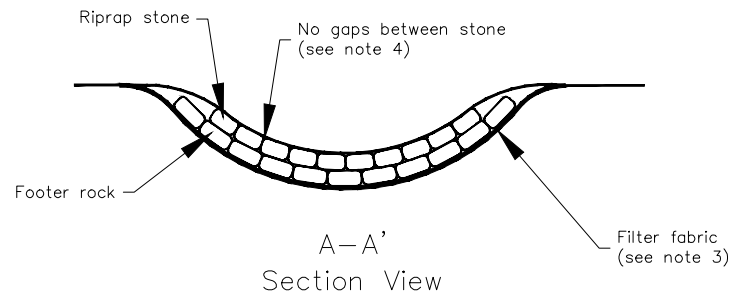
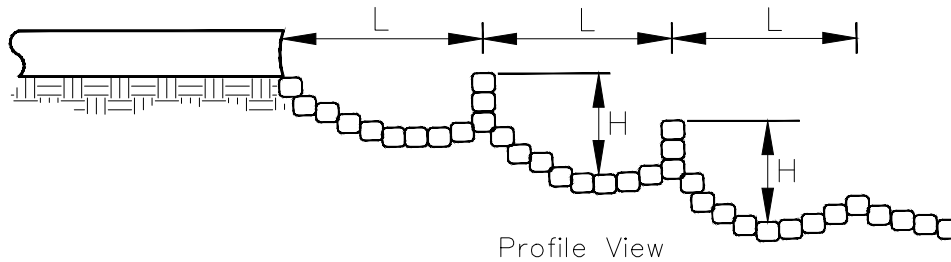
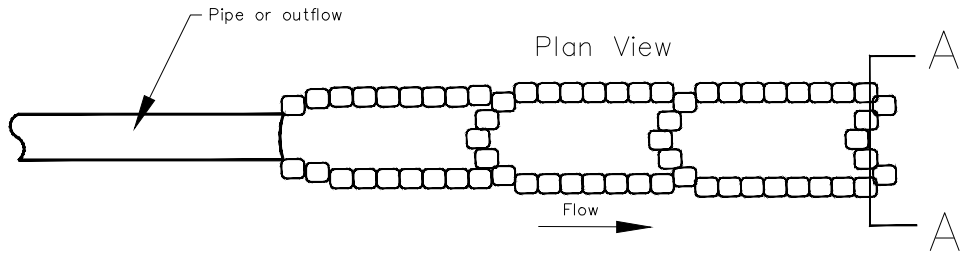




ENGINEERING DEPARTMENT
STANDARD DETAILS

FOR STEEP SLOPES



GENERAL NOTES:

1. L is the Step Length. The length shall be 1 to 4 times the width of the channel.
2. H is the Step Height. The height shall satisfy the equation $(1 < (H/L)_{AVE} / S < 2)$ where S is the channel slope.
3. Install filter fabric under footer stones buried below the channel invert.
4. Construct weir steps on the footer stones with the low point in the center of the step. Abut stones close together so that there are no gaps between the stones.
5. The water depth behind the weir should be half the step depth (0.5H).

NOTE: DRAWING NOT TO SCALE

TITLE:	REVISIONS	DET. NO.
STEEP SLOPES	08/13 15	SD-16