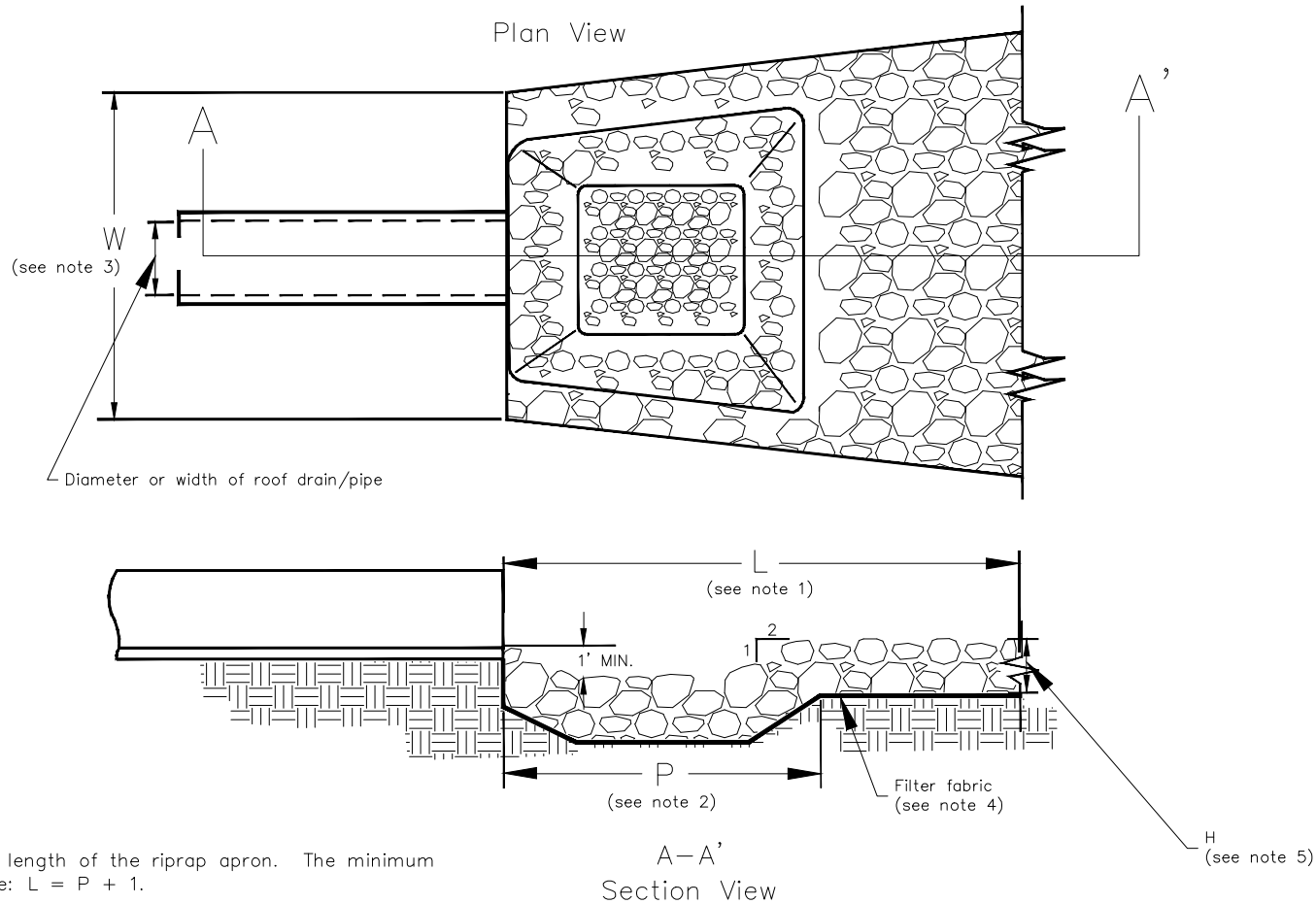




STILLING BASIN



GENERAL NOTES:

1. L is the total length of the riprap apron. The minimum length shall be: $L = P + 1$.
2. P is the Pool Length. The minimum pool length shall be 3 times the diameter or width of the pipe, but not less than 2 feet.
3. W is the width of the riprap apron. The minimum width shall be 3 times the diameter or width of the pipe, but not less than 2 feet.
4. Filter fabric must be installed between riprap and soil.
5. H is the depth of the stone. For stone with a d_{50} =4 inches, the stone depth shall be a minimum of 9 inches. For stone with a d_{50} = 6 inches, the stone depth shall be a minimum of 12 inches.

NOTE: DRAWING NOT TO SCALE

TITLE:	REVISIONS	DET. NO.
STILLING BASIN	08/13 15	SD-17