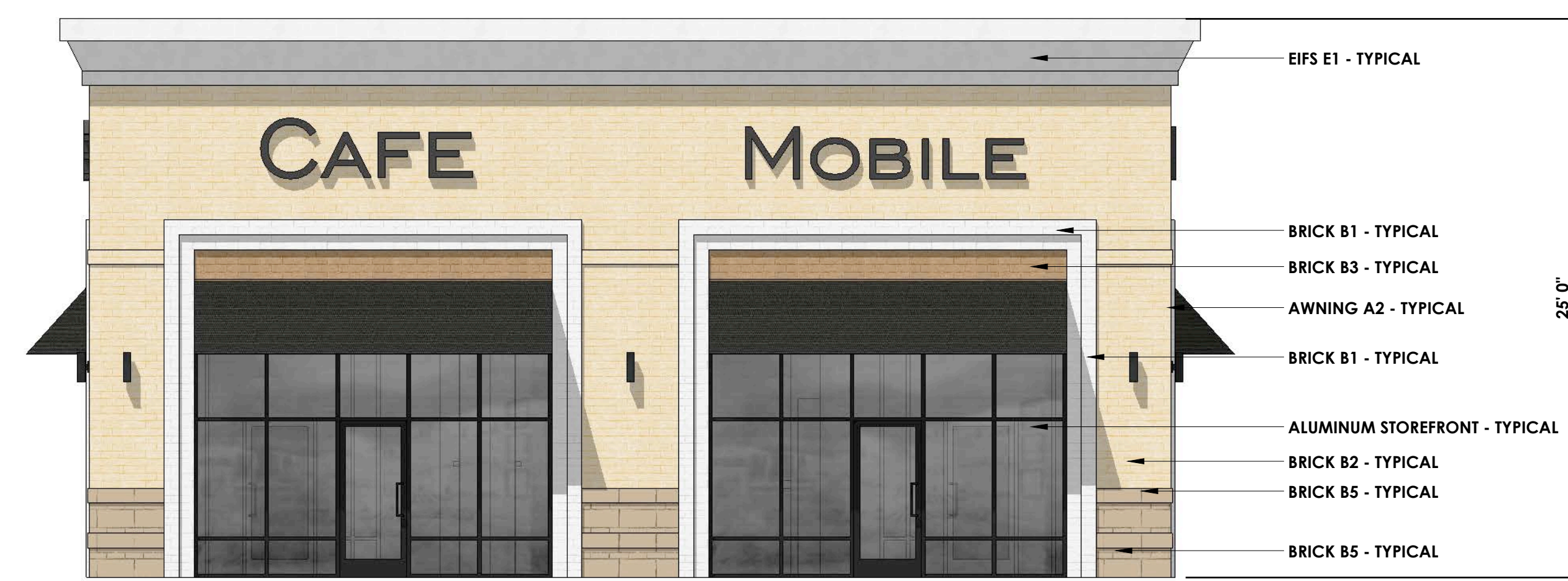


MATERIAL CALCULATIONS

FRONT ELEVATION	
TOTAL WALL AREA:	1,063 SF
GLASS AREA REQUIRED: 783 SF X 0.6	290 SF 60%
GLASS AREA PROVIDED:	384 SF 80%
HIGH QUALITY MATERIALS REQUIRED: (1063-384) X 0.75	509 SF 75%
HIGH QUALITY MATERIALS PROVIDED:	534 SF 79%
RIGHT ELEVATION	
TOTAL WALL AREA:	1,413 SF
GLASS AREA REQUIRED: 613 SF X 0.6	368 SF 60%
GLASS AREA PROVIDED:	494 SF 81%
HIGH QUALITY MATERIALS REQUIRED: (1,413-494) X 0.75	689 SF 75%
HIGH QUALITY MATERIALS PROVIDED:	735 SF 80%
LEFT ELEVATION	
TOTAL WALL AREA:	1,413 SF
GLASS AREA REQUIRED: 613 SF X 0.6	368 SF 60%
GLASS AREA PROVIDED:	494 SF 81%
HIGH QUALITY MATERIALS REQUIRED: (1,413-494) X 0.75	689 SF 75%
HIGH QUALITY MATERIALS PROVIDED:	735 SF 80%
BACK ELEVATION	
TOTAL WALL AREA:	1,005 SF
GLASS AREA REQUIRED: 456 SF X 0.6	274 SF 60%
GLASS AREA PROVIDED:	216 SF 47%
HIGH QUALITY MATERIALS REQUIRED: (1005-216) X 0.75	592 SF 75%
HIGH QUALITY MATERIALS PROVIDED:	677 SF 86%



3 FRONT ELEVATION
3/16" = 1'-0"



4 BACK ELEVATION
3/16" = 1'-0"



2 RIGHT ELEVATION
3/16" = 1'-0"



1 LEFT ELEVATION
3/16" = 1'-0"

MATERIAL LEGEND

- BRICK TYPE B1** - WHITE TO MATCH EXISTING
- BRICK TYPE B2** - YELLOW TO MATCH EXISTING
- BRICK TYPE B3** - CAMEL TO MATCH EXISTING
- BRICK TYPE B4** - BROWN TO MATCH EXISTING
- BRICK TYPE B5** - PRECAST MASONRY TO MATCH EXISTING
- EIFS TYPE E1** - WHITE TO MATCH EXISTING
- EIFS TYPE E2** - TAN TO MATCH EXISTING
- EIFS TYPE E3** - DARK BRONZE TO MATCH EXISTING
- METAL M1** - KYNAR "BONE WHITE"
- METAL M2** - BROWN TO MATCH B2
- AWNING A1** - FABRIC AWNING (YELLOW) TO MATCH EXISTING
- AWNING A2** - FABRIC AWNING (BLACK) TO MATCH EXISTING
- STOREFRONT** - ALUMINUM STOREFRONT TYPICAL
- GLASS** - DARK BRONZE ANODIZED
- ROOF TYPE R1** - LOW E CLEAR TYPICAL
- ROOF TYPE R1** - WHITE SINGLE PLY MEMBRANE

ALL ROOFTOP HVAC UNITS SHALL BE SCREENED BY PARAPETS

SIGNS SHOWN FOR REFERENCE AND ARE SUBJECT TO CHANGE